

ALL IN CASE SAMSUNG TAB ACTIVE

Protect your device with our ultra-hard case, designed to withstand the most extreme conditions.

Equipped with a 360° rotating hand strap, it offers optimum handling in all circumstances. Robust and ergonomic, it's the ideal ally for professionals on the move!



RUGGED PROTECTIVE CASE + SHOULDER STRAP
FOR SAMSUNG GALAXY TAB ACTIVE5 - GALAXY TAB
ACTIVE3 8''
Ref. 072002

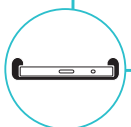


REINFORCED CORNERS

Absorb shocks in the event of a fall

SILICONE EXTERIOR

Anti-slip, anti-scratch and anti-shock silicone coating



RIGID EDGE

Rigid protective edge to shield the screen in the event of a fall



ROTATIVE HAND STRAP

360° rotating hand strap



INTEGRATED TRIPOD

Landscape/video position

Weight : 390 g | Dimensions : 275 x 180 x 20 mm

* Non-contractual visual - Galaxy Tab A9+ Case



ACCESSORIES INCLUDED

Hand strap



360° rotation



Landscape mode



Portrait mode

Tripod



Video/landscape position

Stylus holder



Integrated on the hand strap
Stylus not included

Shoulder strap



Shoulder strap included

* Non-contractual visual - Galaxy Tab A9+ Case

REFERENCES

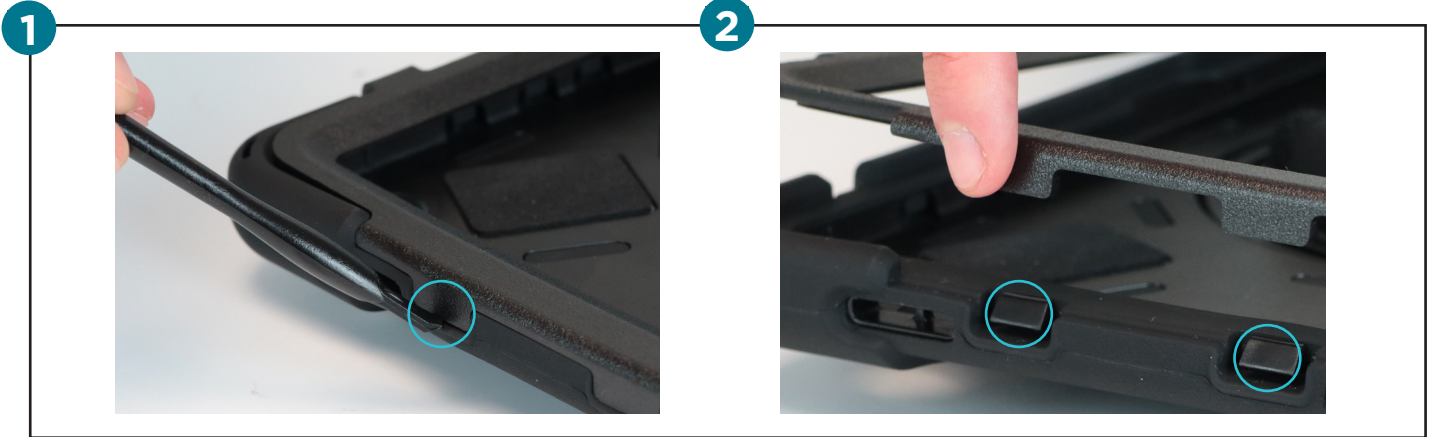
Ref	Product	EAN code
072002	All in Case for Galaxy Tab Active5 - Galaxy Tab Active3 8" + Shoulderstrap	3700992534862



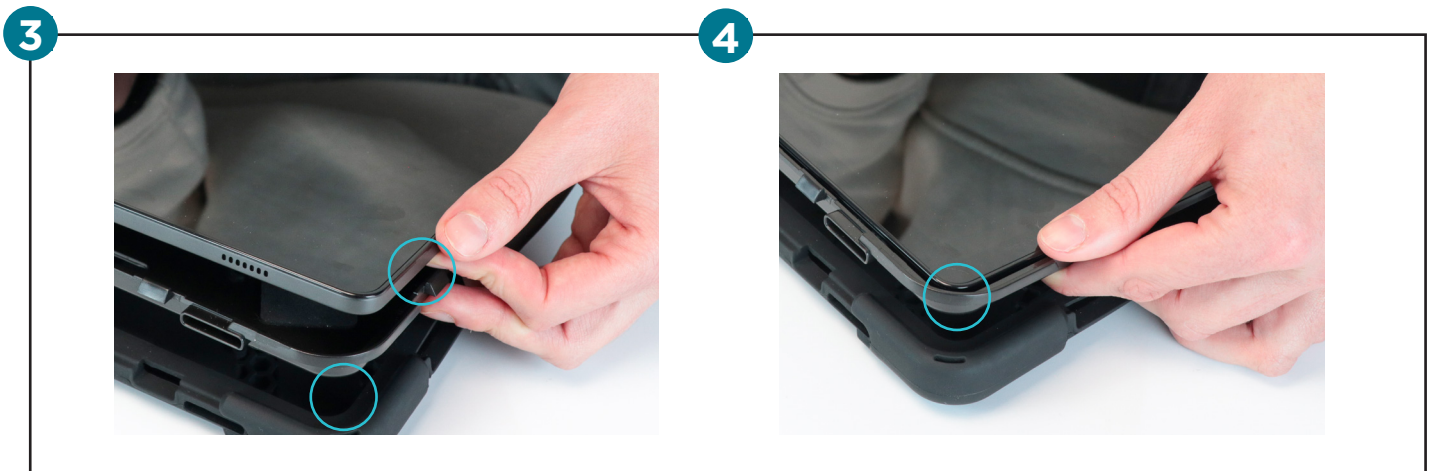
INSTALLATION GUIDE

REF. 072002

PROTECTIVE CASE



USE THE INSTALLATION TOOL TO UNLOCK THE FOUR SIDE CLIPS AND REMOVE THE HARD FRONT PANEL.



PLACE THE TABLET ON THE RIGID BACK PLATE, MAKING SURE THAT THE CAMERA LENS IS ALIGNED WITH THE CUT-OUT.



REPLACE THE SILICONE BASE AND CORNERS, THEN REPOSITION THE FRONT PANEL, INSERTING THE SIDES FIRST. THE SIDES FIRST. CONTINUE ALL THE WAY ROUND UNTIL ALL THE FIXING CLIPS ARE PROPERLY ENGAGED.



INSTALLATION GUIDE

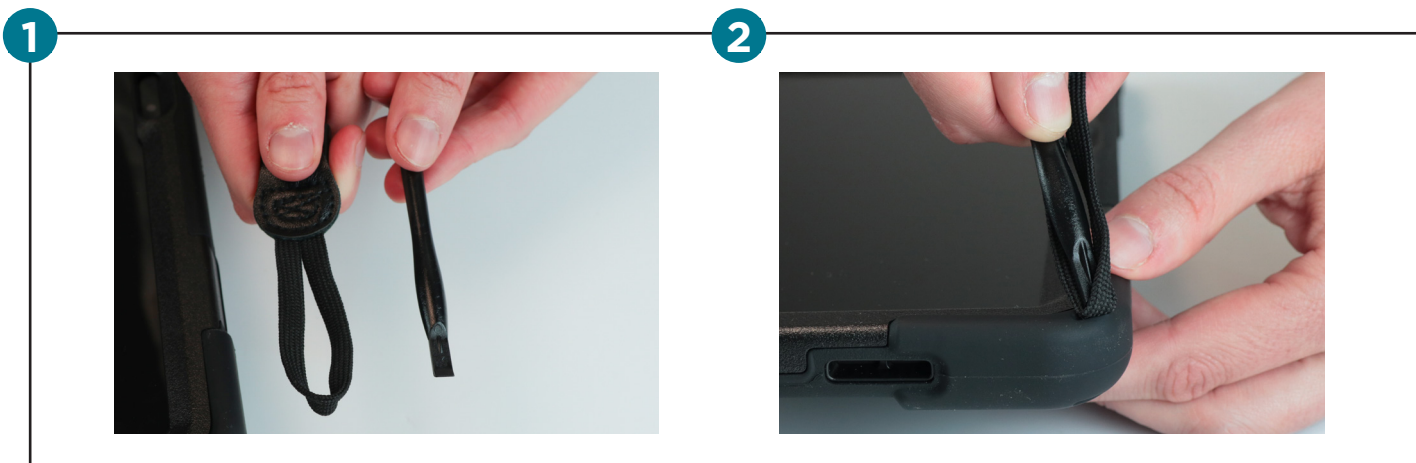
REF. 072002

TRIPOD MODE

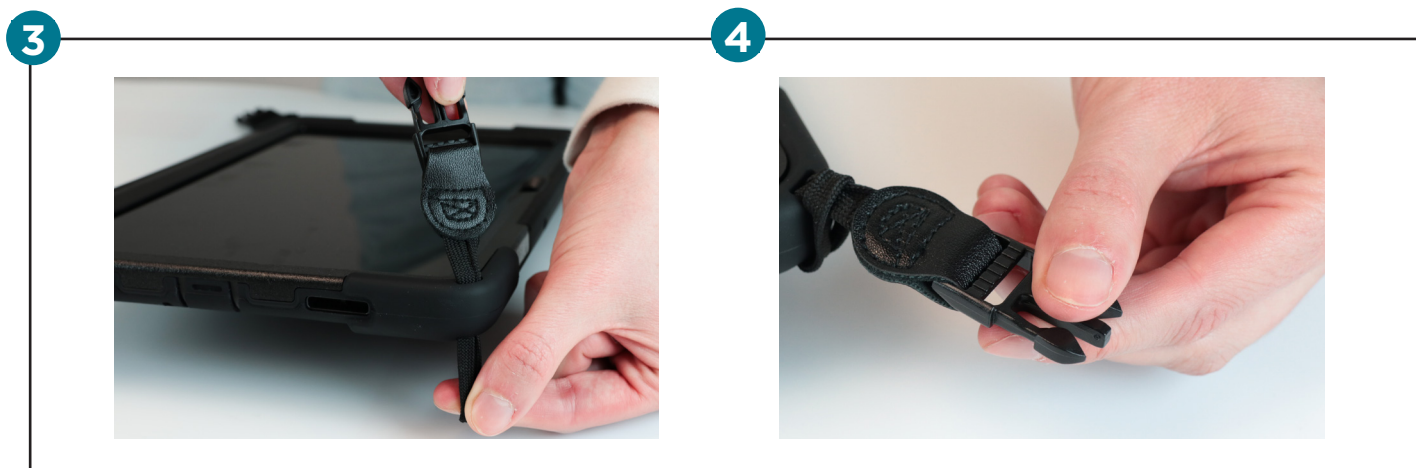


PULL OUT THE BRACKET AND INSERT IT INTO THE SLOT TO SECURE THE TRIPOD.
TO STORE, SIMPLY PRESS THE BUTTON.

SHOULDER STRAP



PASS THE TOOL THROUGH THE CORD, THEN THREAD THE CORD THROUGH THE NOTCH UNTIL IT PASSES THROUGH THE SILICONE CASE.



PULL THE CORD AT BOTH ENDS, TIE A KNOT AND ATTACH THE LOOP TO THE REST OF THE SHOULDER STRAP.