

PROTECH ROTATING HANDLE



2
YEARS
WARRANTY

PROTECH cases have been designed in France to protect your devices efficiently against shocks, vibrations and breakage!

A very high level of resistance to falls: **20 times higher than the requirements of the military standard MIL-STD 810G.** More than 500 falls from 1.2m height on a concrete floor!

Flexible, light, ergonomic and very efficient, PROTECH cases are perfectly adjusted to the devices that they protect. **Ergonomics and portability are optimized thanks to their accessories included (360° rotating tripod, grip, stylus holder).**

Users will gain efficiency and freedom of movement in the field, at the office or in a classroom.



REINFORCED PROTECTIVE CASE FOR ET51/56 10.1"

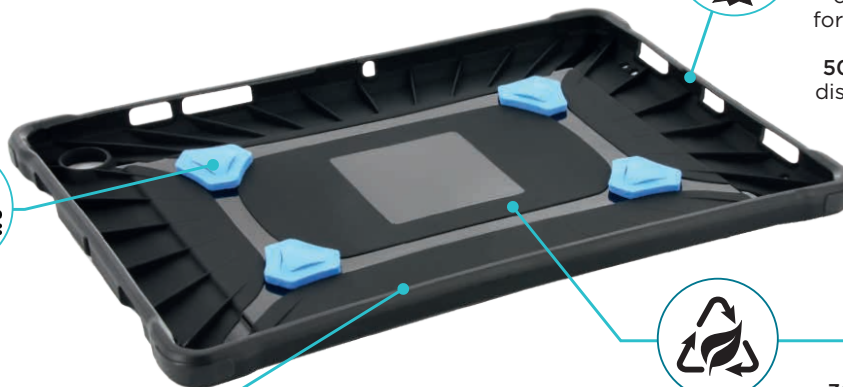


AIRCELL SYSTEM

Air pockets in all 4 corners and a structure formed by flexible ribs to absorb up to **500 drops of 1.20m** and disperse the shock wave.

4 SHOCK WAVE ABSORBERS

TFP 4.0* pads, to cushion and absorb shocks and vibrations



RECYCLED MATERIAL

Case made with **30% of recycled material**



ADVANCED RAISED EDGES

Design to protect your device and camera lens **in the event of falls**



+ ***TFP 4.0** MOBILIS® exclusivity

The new generation of MOBILIS® exclusive anti-shock material

Specifically made to cushion shocks even the most violent, it instantly absorbs up to 90% of impact energy, then disperses it. Thus, no shock wave is transmitted to your device. This new TFP 4.0 generation is reinforced with more microcells, to be more efficient in repeated impact absorption.

PROTECH ROTATING HANDLE



REINFORCED PROTECTIVE CASE
FOR ET51/56 10.1"

ACCESSORIES INCLUDED

Elastic hand strap



Rotating system 360°



Layout position



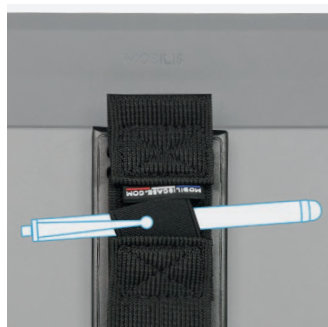
Portrait position

Rotating tripod



Video position

Stylus holder



On the elastic hand strap
Stylus not included

REFERENCES

To know all available references, please contact your sales representative.

| Brand | Ref | Product | EAN code |
|-------|--------|---|---------------|
| ZEBRA | 067005 | PROTECH - Case + 360° handstrap + kickstand for ET51-ET56 10.1" | 3700992525655 |

MORE SOLUTIONS WITH ACCESSORIES

Whatever options you choose for your PROTECH case, you can add complementary and compatible accessories. Thanks to them, you will gain in working comfort and you will easily optimise all your work actions.



SHOULDER STRAP



001025
Ergonomic shoulder strap with **neck pad**
2 attachment points



001027
Shoulder strap with **break away system**
2 attachment points



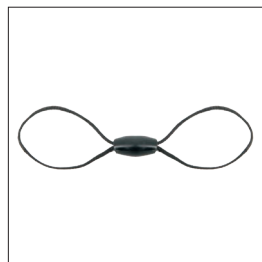
001024
Typing and transport shoulder strap
4 attachment point



001026
Harness ergonomic shoulder strap
4 attachment points



001048
Basic shoulder strap with 4 soft rings
2 attachment points



001050 - Pack of 4
Soft Ring

STYLUS



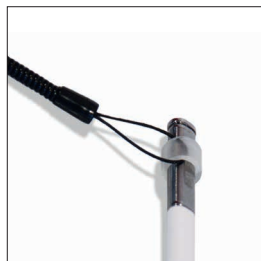
001030 - Pack of 10
Retractable capacitive styluses & spiral cord



001054 - Pack of 10
Capacitive stylus & spiral cord



001053
Capacitive stylus per unit



001033 - Pack of 10
Spiral cord & elastic tube



001032 - Pack of 10
Spiral cord



001080 - Pack of 10
Adhesive Stylus Holder with universal capacitive stylus and spiral cord



001081
Universal adhesive holder for stylus or pen

001059
Only adhesive stylus holder.

datacapture.mobiliscase.com